

RIO-2018 User Web Guide

2014-06-22

Content

1	Getting Started	1
1.1	Edit Web Page	1
1.2	Convert and Upload Web Page	1
1.3	Test	2
1.4	Ajax request and response	3

1 Getting Started

1.1 Edit Web Page

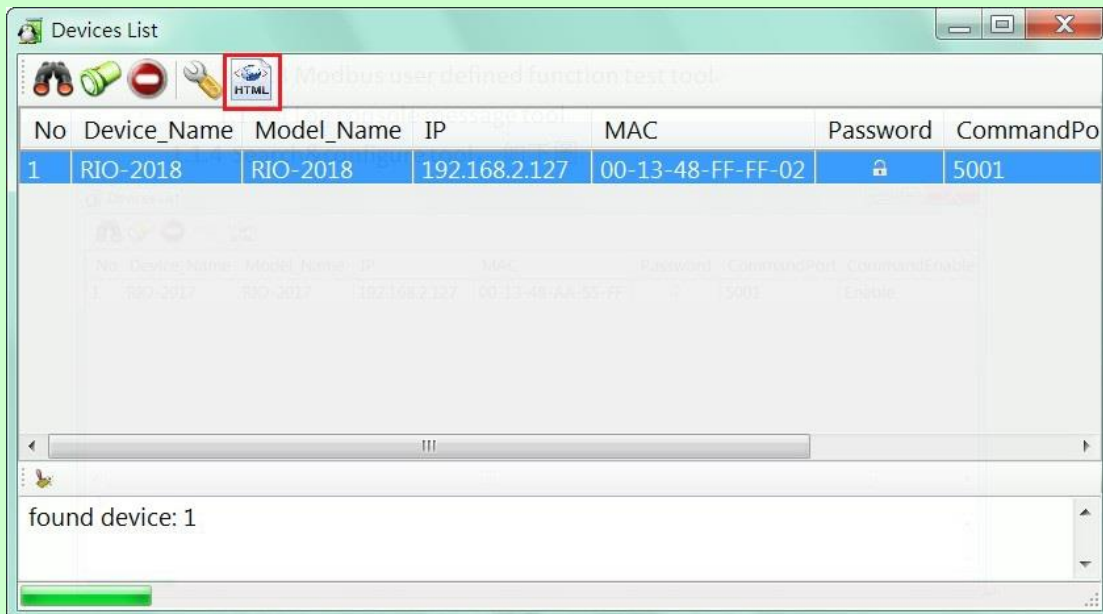
1.1.1.1 Make your web page files

e.g. Example/TC_DIO



1.2 Convert and Upload Web Page

1.2.1 Manager Utility → Search device → Convert web data



1.2.2 Press "Convert" all files in "Source directory" to .anf file

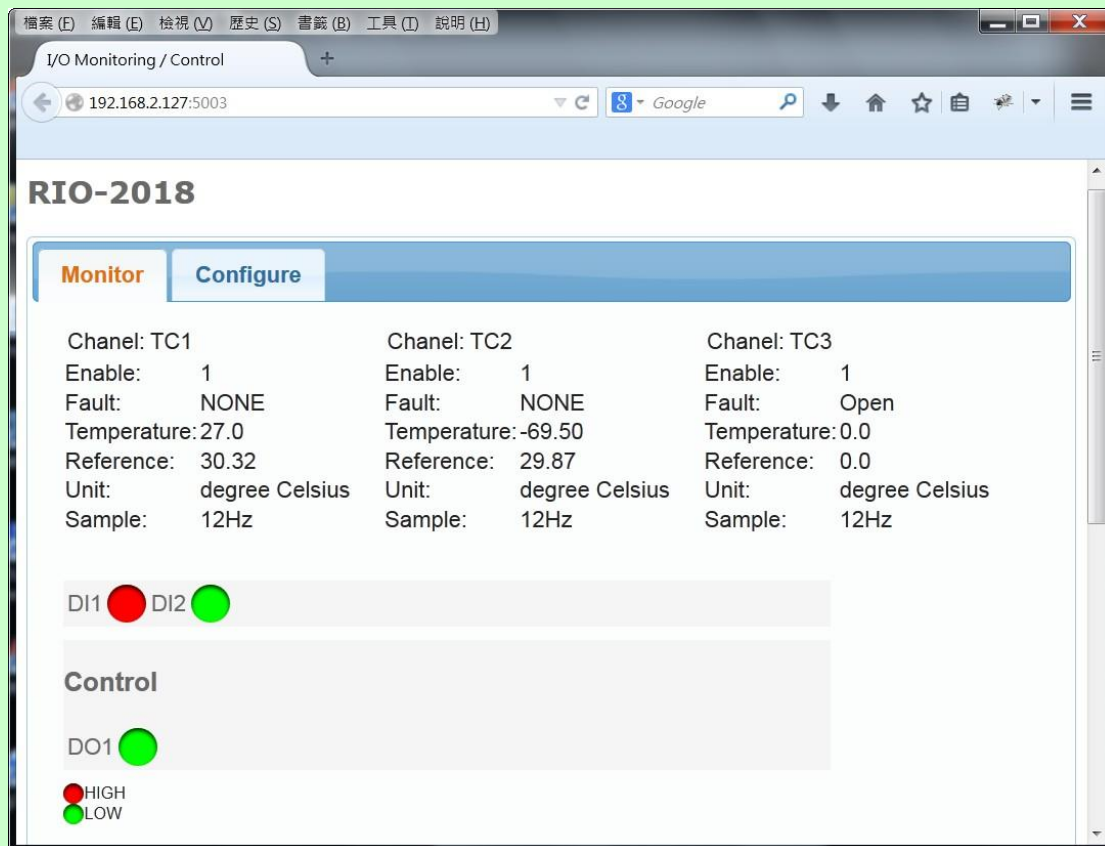
1.2.3 Press "Upload" to save the web file to device



1.2.4 .anf file max size is 384K

1.3 Test

1.3.1 <http://192.168.2.127:5003>



1.4 Ajax request and response

1.4.1 TC/DI/DO Value

1.4.1.1 Uri: /action/fetchValue

1.4.1.2 Response(JSON):



1.4.2 Set DO Value

1.4.2.1 Uri: /action/CtrlDO

POST http://192.168.2.127:5003/action/CtrlDO 200 OK 213ms

標頭	Post	回應	XML
參數	application/x-www-form-urlencoded		
DO1	L		
原始碼	D01=L		

1.4.3 Get TC Configure

1.4.3.1 Uri: /action/fetchAIcfg

1.4.3.2 Response(JSON):

GET http://192.168.2.127:5003/action/fetchAIcfg?all_val=0&_id=1403404727048 200 OK 502ms

參數	標頭	回應	XML	JSON
<pre>{ "CfgSelect": [{"name": "en_0", "val": "1"}, {"name": "sp_0", "val": "12"}, {"name": "en_1", "val": "1"}, {"name": "sp_1", "val": "12"}, {"name": "en_2", "val": "1"}, {"name": "sp_2", "val": "12"}, {"name": "unit", "val": "0"}] }</pre>				

1.4.3.2.1 en_x means "enable": 0=disable, 1=enable

1.4.3.2.2 sp_x means "sample rate": 1~12Hz

1.4.3.2.3 unit: 0=degree Celsius, 1=degree Fahrenheit

1.4.4 Set TC Configure

1.4.4.1 Uri: /action/CfgAI

1.4.4.1.1 add "&save=1" to save settings to device

POST http://192.168.2.127:5003/action/CfgAI 200 OK 199ms

標頭	Post	回應	XML
參數	application/x-www-form-urlencoded	不排序	
en_0	1		
en_1	1		
en_2	1		
save	1		
sp_0	12		
sp_1	12		
sp_2	12		
unit	1		
原始碼	en_0=1&sp_0=12&en_1=1&sp_1=12&en_2=1&sp_2=12&unit=1&save=1		

1.4.4.2 Response(text): as shown below

POST http://192.168.2.127:5003/action/CfgAI 200 OK 211ms

標頭 Post 回應 XML

Device reboot now.
Web will be refreshed 5 seconds later.